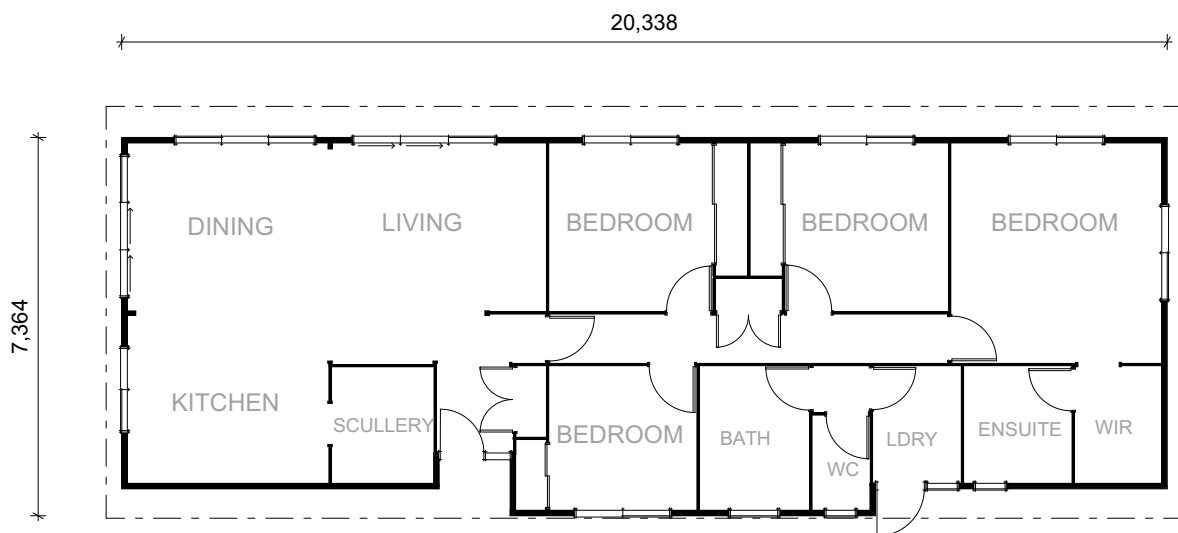




Riverview Kitset

142m²

 4 Bedrooms
  1 Living area
  2 Bathrooms
 Walk in Pantry
 WIR
 Separate Laundry



The four bedroom Riverview packs a whole lot into a 142m² footprint, including generous bedrooms, two bathrooms, scullery and walk-in-wardrobe. The bedrooms in the Riverview are at one end of the home, separating the living and sleeping areas for ultimate peace and quiet. With excellent storage, separate laundry this home has plenty of space in all the right places.

Talk to the Kitset team about a Riverview for your site today!

Phone 0508 562 596 | Email info@lockwood.co.nz
lockwoodreadybuilt.co.nz/kitset





Riverview Kitset

142m²

 4 Bedrooms  1 Living area  2 Bathrooms Walk in Pantry WIR Separate Laundry

Inclusions

- Exterior Walls, windows and doors
- Interior Walls, doors, wardrobes and cupboards
- Suspended timber subfloor
- Roof framing timbers
- Sarked timber ceilings
- Full building plans for site-specific consent
- Allowance for preparation site-specific consents
- Allowance for freight

Exclusions

When you order a kitset from Lockwood, there are a number of items that aren't included in the advertised price. These include but are not limited to:

- Any building processes required to construct the home
- Kitchen, bathroom and laundry fixtures
- Drapes and floor coverings
- Under floor and roof insulation
- Sealants/glues, floor nails / product nails, screws
- Electrical fixtures, electrical wiring
- Plumbing fixtures and fittings
- Roofing, gutters and downpipes
- Wet wall linings (Acrylic / Tiles to Bath/Shower and associated finishing materials)
- Site work materials (including concrete, reinforcing, service connections, house piles and bearer kits)
- BCA fees for site consents

Talk to us for a full list of inclusions and exclusions.

Talk to the Kitset team about a Riverview for your site today!

Phone 0508 562 596 | Email info@lockwood.co.nz
lockwoodreadybuilt.co.nz/kitset

