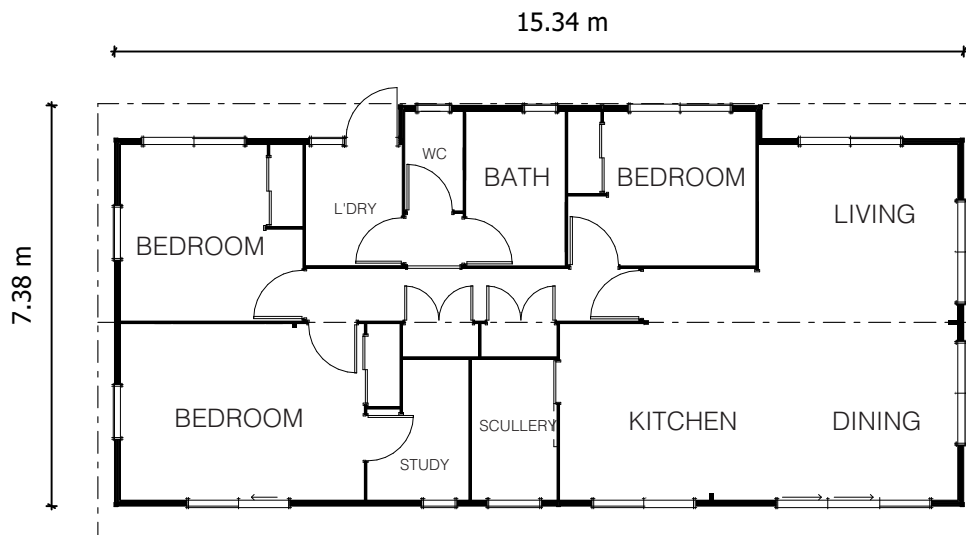




Sunview Kitset

105m²

 3 Bedrooms
  1 Living area
  1 Bathroom
 Walk in Pantry
 WIR
 Separate Laundry



The Sunview is a compact three bedroom design. A generous kitchen and scullery are at the heart of this home offering plenty of room for entertaining in the open plan living and dining space. The three double bedrooms, separate toilet and dedicated laundry make this an ideal family home. Storage has been included in the hallway and each bedroom has a built in wardrobe. A study space off the master bedroom provides a private place to work from home or could easily be converted into an ensuite if an additional bathroom is required.

Talk to the Kitset team about a Sunview for your site today!

Phone 0508 562 596 | Email info@lockwood.co.nz
lockwoodreadybuilt.co.nz/kitset





Sunview Kitset

105m²

 3 Bedrooms  1 Living area  1 Bathroom Walk in Pantry WIR Separate Laundry

Inclusions

- Exterior Walls, windows and doors
- Interior Walls, doors, wardrobes and cupboards
- Suspended timber subfloor
- Roof framing timbers
- Sarked timber ceilings
- Full building plans for site-specific consent
- Allowance for preparation site-specific consents
- Allowance for freight

Exclusions

When you order a kitset from Lockwood, there are a number of items that aren't included in the advertised price. These include but are not limited to:

- Any building processes required to construct the home
- Kitchen, bathroom and laundry fixtures
- Drapes and floor coverings
- Under floor and roof insulation
- Sealants/glues, floor nails / product nails, screws
- Electrical fixtures, electrical wiring
- Plumbing fixtures and fittings
- Roofing, gutters and downpipes
- Wet wall linings (Acrylic / Tiles to Bath/Shower and associated finishing materials)
- Site work materials (including concrete, reinforcing, service connections, house piles and bearer kits)
- BCA fees for site consents

Talk to us for a full list of inclusions and exclusions.

Talk to the Kitset team about a Sunview for your site today!

Phone 0508 562 596 | Email info@lockwood.co.nz
lockwoodreadybuilt.co.nz/kitset

